

NDIS TRANSPORT AND TRAVEL - YOUR GUIDE

There are NDIS rules that providers must follow when charging for their travel and transport. We have created a visual guide for the different scenarios, what can and cannot be charged, and the rules that apply to participant transport funds.



Pathways to Care

Understanding NDIS Travel & Transport

CORE claimable travel & transport

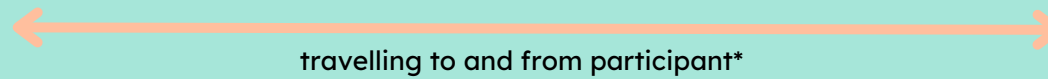
LEGEND:



ASSISTANCE WITH DAILY LIFE



\$/km's ✓



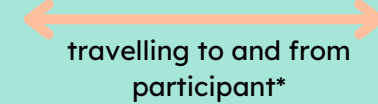
providing face-to-face supports



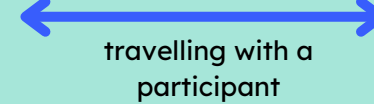
ASSISTANCE WITH SOCIAL & COMMUNITY PARTICIPATION



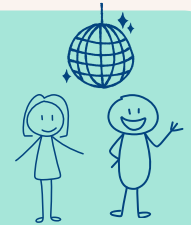
\$/km's ✓



\$/km's ✓



providing face-to-face supports



TRANSPORT RECURRING TRANSPORT***

(this funding is for participants who cannot use public transport and is paid into their bank account or plan managed)



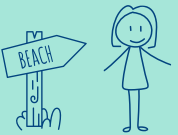
If transport is included in your NDIS plan.

personal travel costs for everyday life

e.g. taxi, bus, uber



e.g. school, doctors, beach etc.

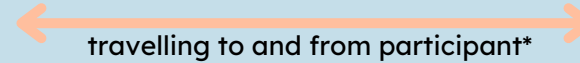


CAPACITY BUILDING claimable travel

- SUPPORT COORDINATION / & PSYCHOSOCIAL RECOVERY COACHES***
- IMPROVED LIVING ARRANGEMENTS
- INCREASED SOCIAL & COMMUNITY PARTICIPATION
- FINDING AND KEEPING A JOB
- IMPROVED RELATIONSHIPS / RELATIONSHIPS***
- BEHAVIOUR SUPPORTS***
- IMPROVED HEALTH & WELLBEING / HEALTH & WELLBEING***
- IMPROVED LEARNING / LIFELONG LEARNING***
- IMPROVED DAILY LIVING SKILLS



\$/km's ✓



providing face-to-face Capacity Building supports



*Please refer to the NDIS Pricing Limits and Arrangement

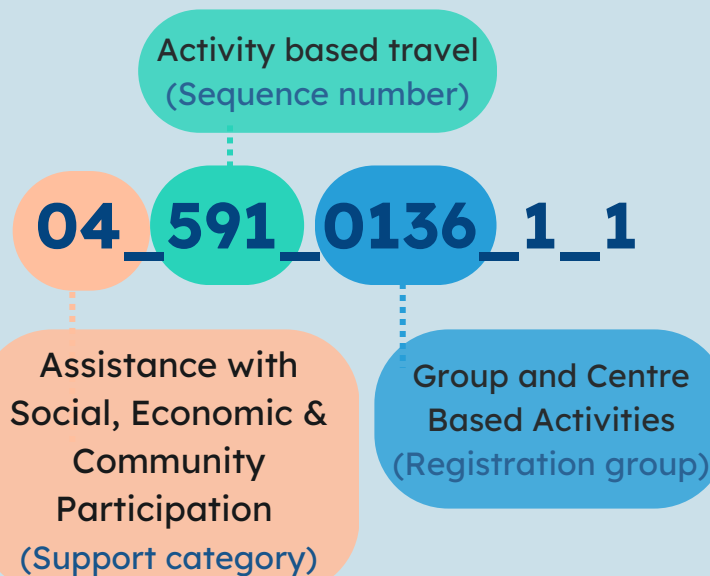
** This time is included in your delivered supports

*** PACE 2023 category changes

Breaking down the travel line-item code

For example: A support worker has a participant in the car to attend a group based activity.

Hours spent on activity itself will be funded under 04_102_0136_1_1



Provider travel (Sequence number)

01_799_0107_1_1

Assistance with Daily Life (Support category)

Daily Personal Activities (Registration group)

For example: A support worker travels to a participant's house to clean their house.

Hours spent providing the cleaning service will be funded under 01_020_0107_1_1

Support category & Registration group must always match the service provided.

MMM areas (travel time)

When an NDIS provider travels to deliver supports, travel time can be claimed based on the Modified Monash Model (MMM) area classification where the participant is located.

Metropolitan and Regional Centres MMM 1-3	30 mins (each eligible worker)	Regional Areas MMM 4-5	60 mins (each eligible worker)
--	--------------------------------	---------------------------	--------------------------------

Return Travel:

For Core and Capacity-Building supports, providers can claim travel time from the last participant back to their usual place of work, as per the same time limits (as shown above).

Call us for help!

📞 1300 467 284